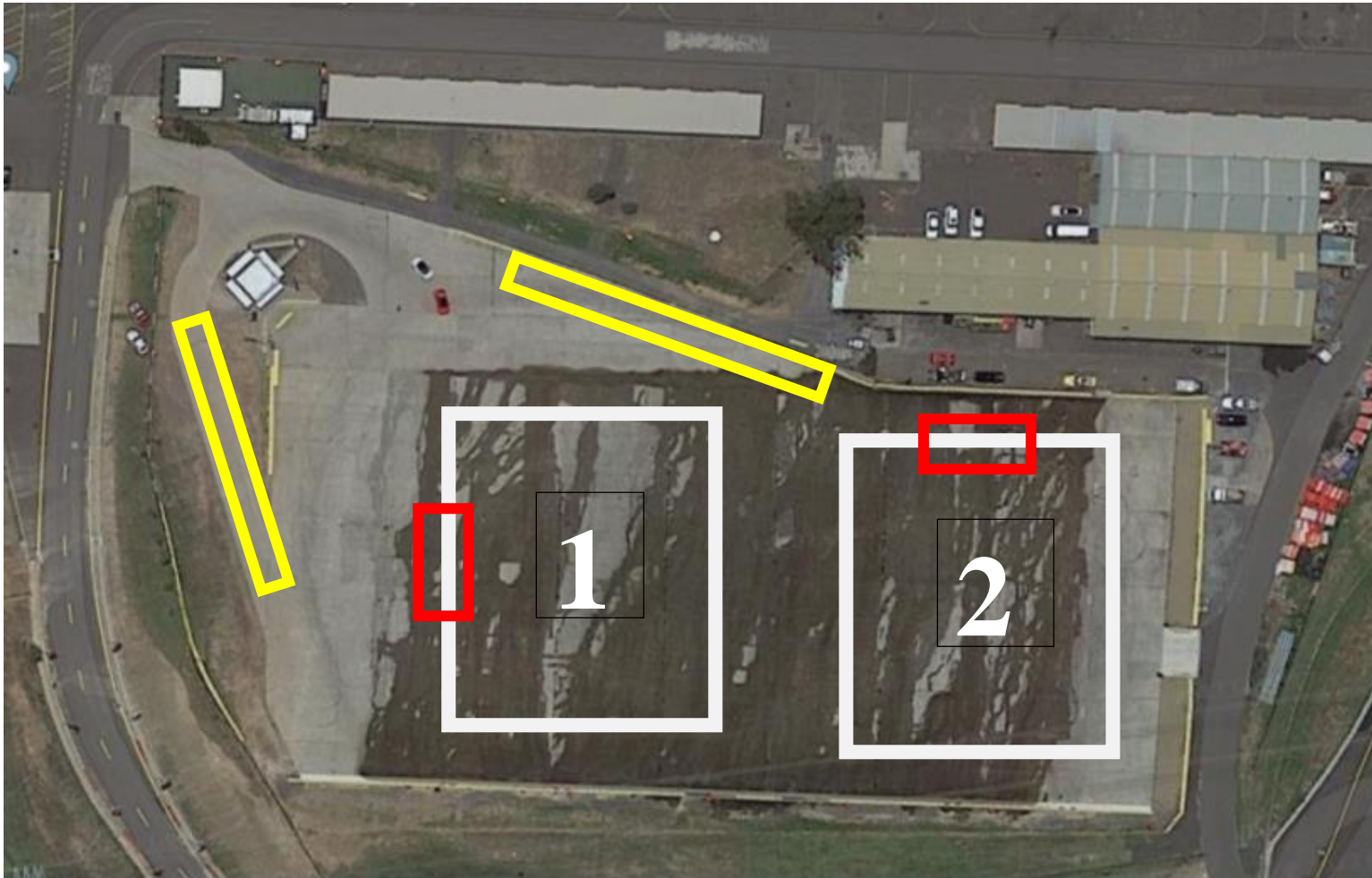


**NSW MX5 Club Motorkhana – Round 3 2023**  
**Venue Map (NOT TO SCALE)**

Test Areas 1 and 2 marked in white for Tests 1 to 6.

Start and Finish garages are in red regions.

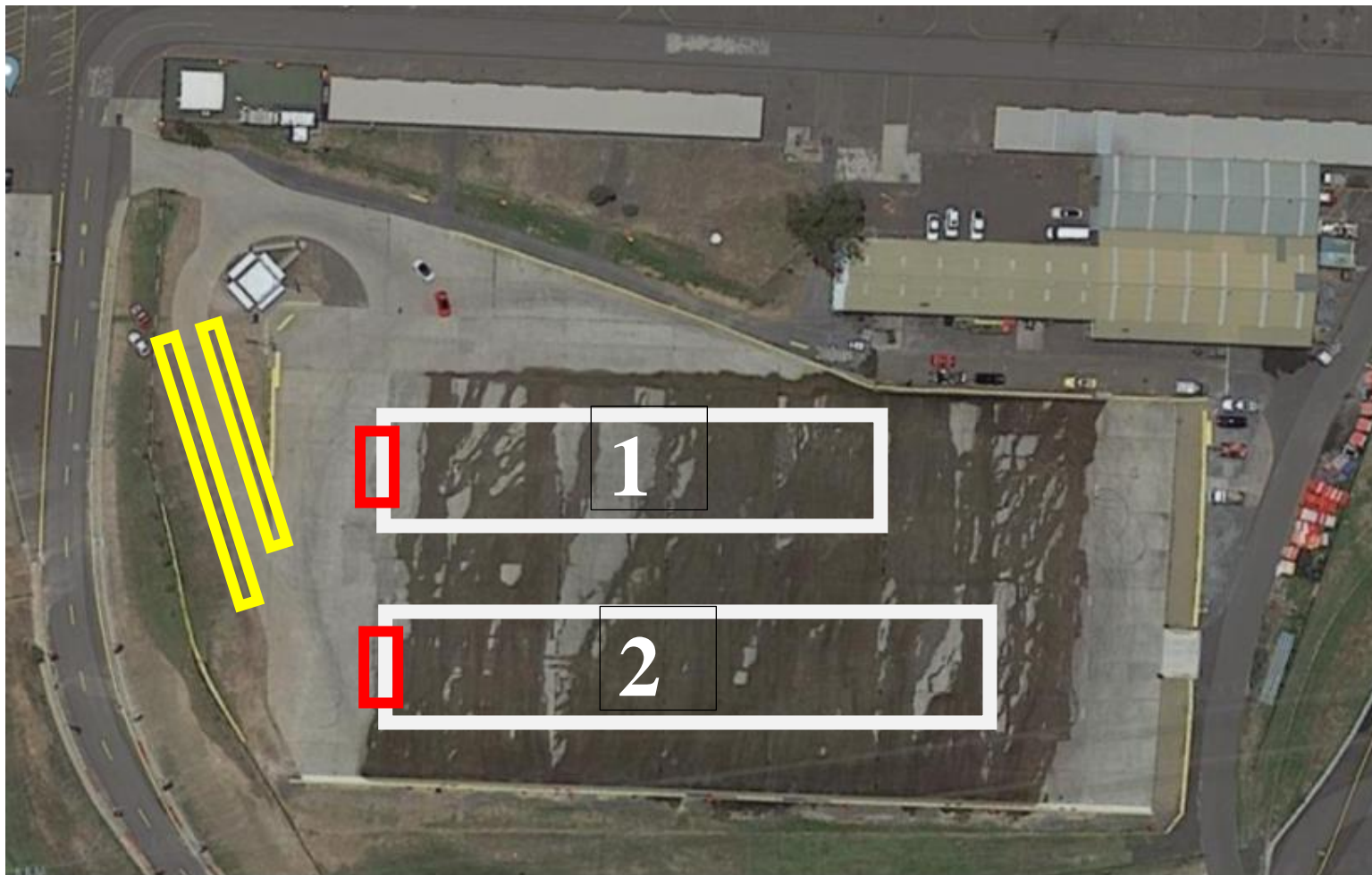
Competitor marshalling areas / queues are shown in yellow. Do not park adjacent to, or inline with a finish garage.



Test Areas 1 and 2 marked in white for Tests 7 and 8.

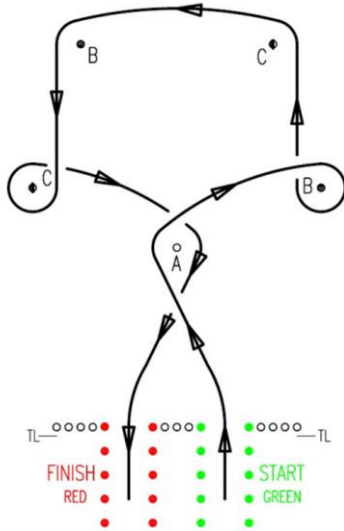
Start and Finish garages are in red regions.

Competitor marshalling areas / queues are shown in yellow. Do not park adjacent to, or inline with a finish garage.



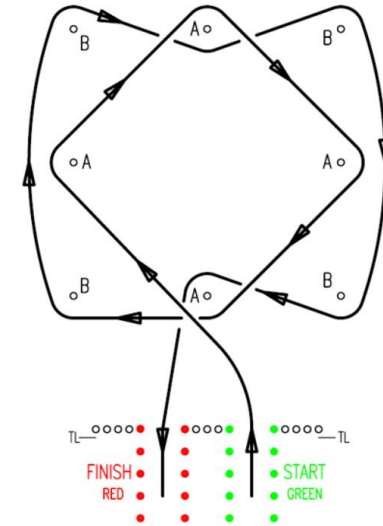
### Test Area 1

Test 1 – Bowler

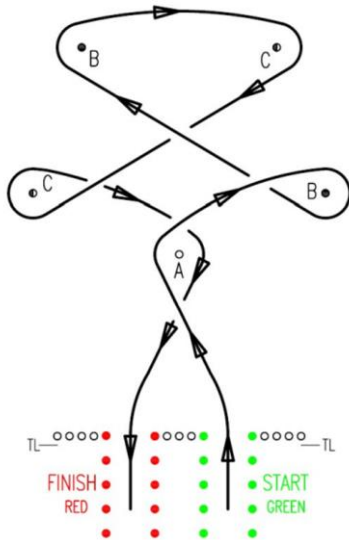


### Test Area 2

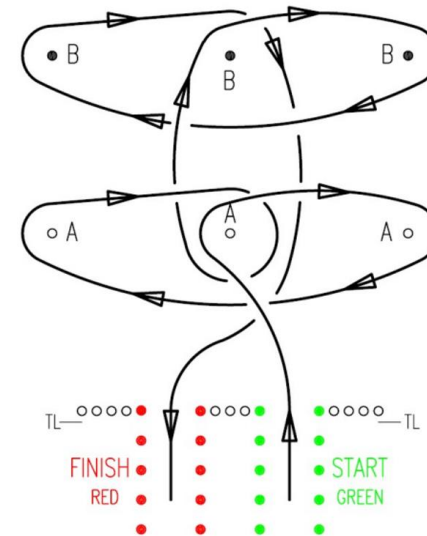
Test 2 – Diamond Slalom



Test 3 – Top Hat

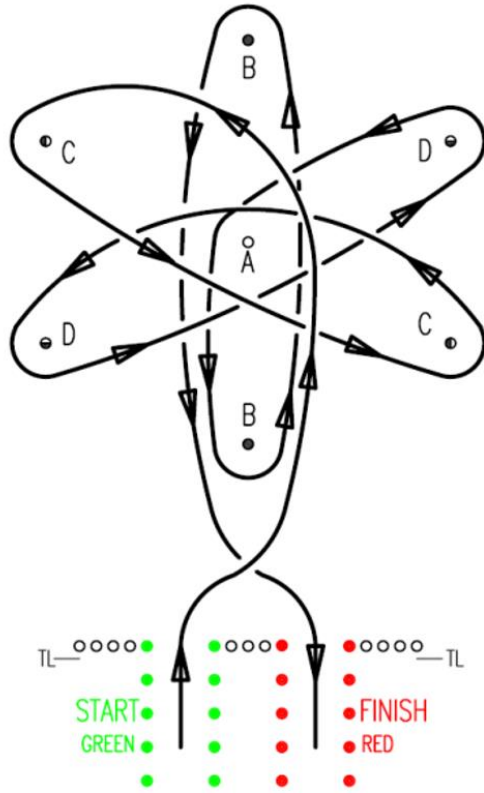


Test 4 – Double Loop



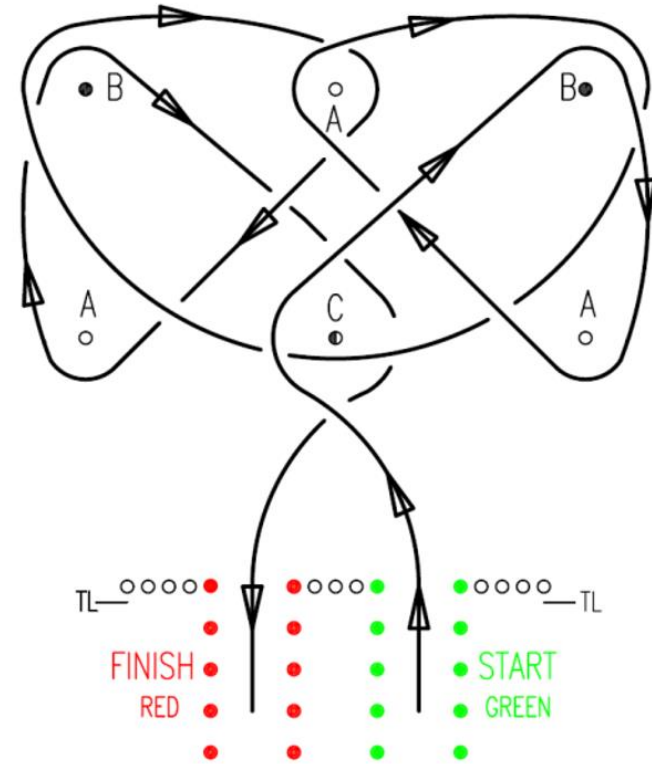
### Test Area 1

#### Test 5 – Atom



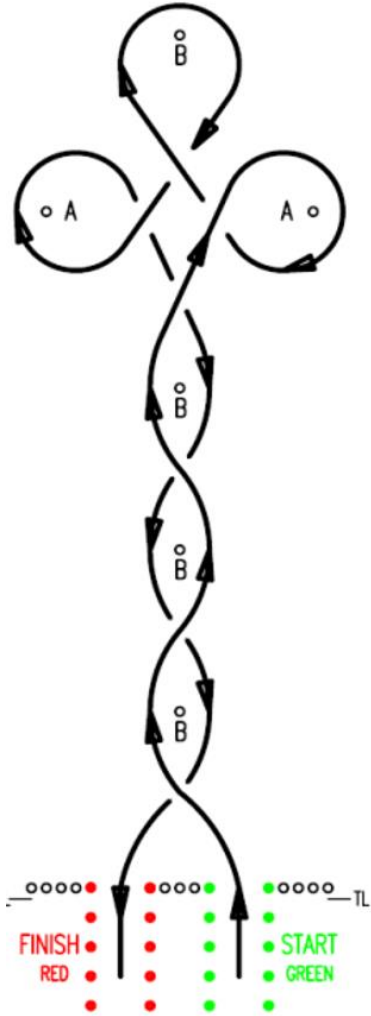
### Test Area 2

#### Test 6 – Try Angles



### Test Area 1

Test 7 – Cloverleaf



### Test Area 2

Test 8 – Crossover

